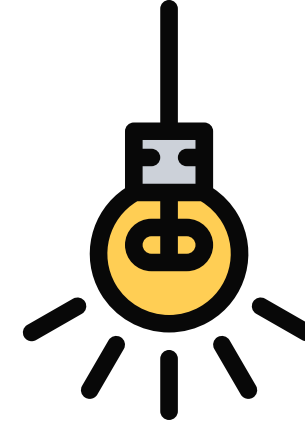
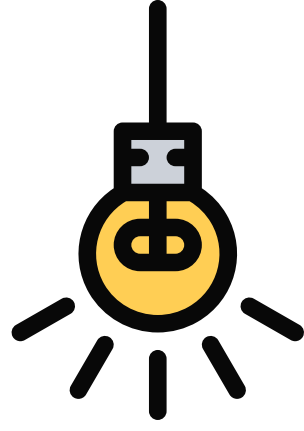
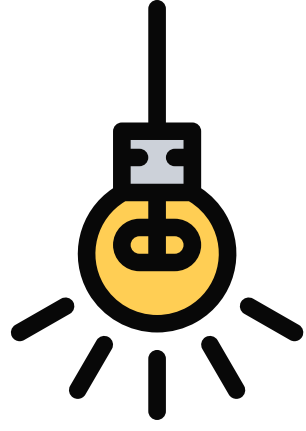


FUNNY TRIVIA QUESTIONS AND ANSWERS (PRINTABLE)

A funny trivia quiz with fun questions and
answers to play with family & friends.
Have fun!



Visit [CrowdsTrivia.com](https://www.crowds-trivia.com) - Play Fun Trivia Quizzes



1. A group of kittens is called?

- Kindle
- Cat-crowd
- Cat-many
- Cattle



2. What was Mickey Mouse's original name meant to be?

- Malcolm
- Martin
- Mortimer
- Matthew



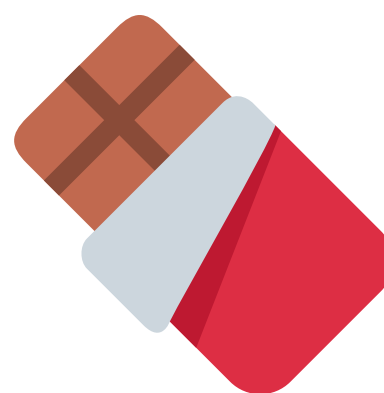
3. What bird eats with its head upside down?

- Flamingo
- Penguin
- Ostrich
- Pelican



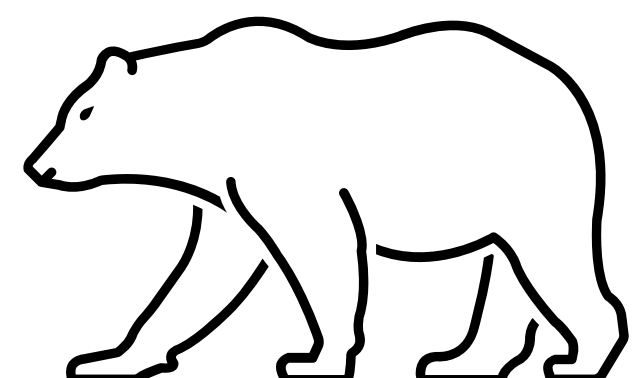
4. Chocolate was introduced in the 16th century in Europe.
By whom?

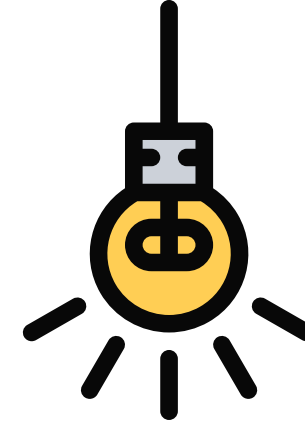
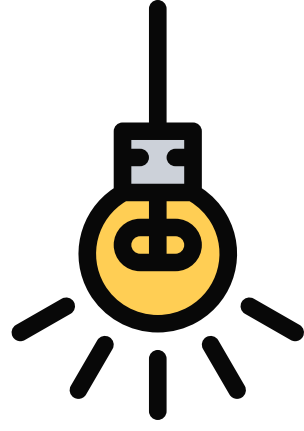
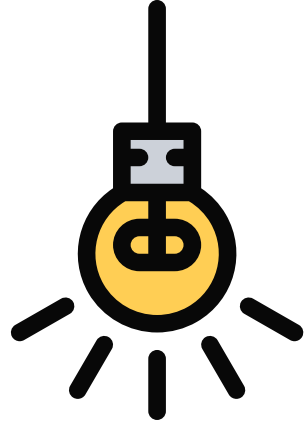
- The Germans
- The Cubans
- The Indians
- The Aztecs



5. What type of bear is Baloo (the one from The Jungle Book)?

- Panda bear
- Grizzly bear
- Sloth bear
- Polar bear





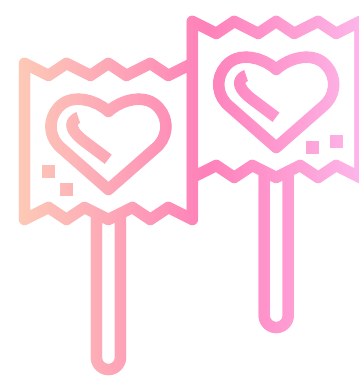
6. Who sang the famous sitcom f.r.i.e.n.d.s theme song?

- Coldplay
- The Rembrandts
- Imagine Dragons
- Maroon 5



7. Sugar Candy was invented by whom?

- The Kiwis
- The Indians
- The English
- The Mongol Empire



8. Who is Jerry Seinfeld's favorite superhero?

- Batman
- Iron Man
- Captain America
- Superman



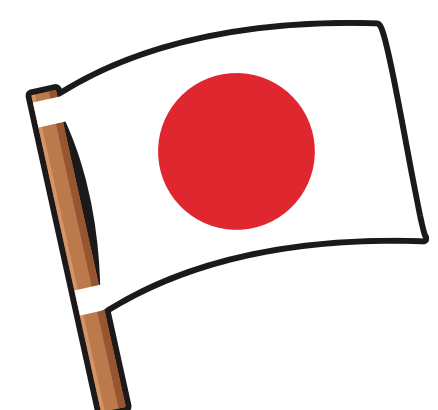
9. Which country is said to be shaped like a boot?

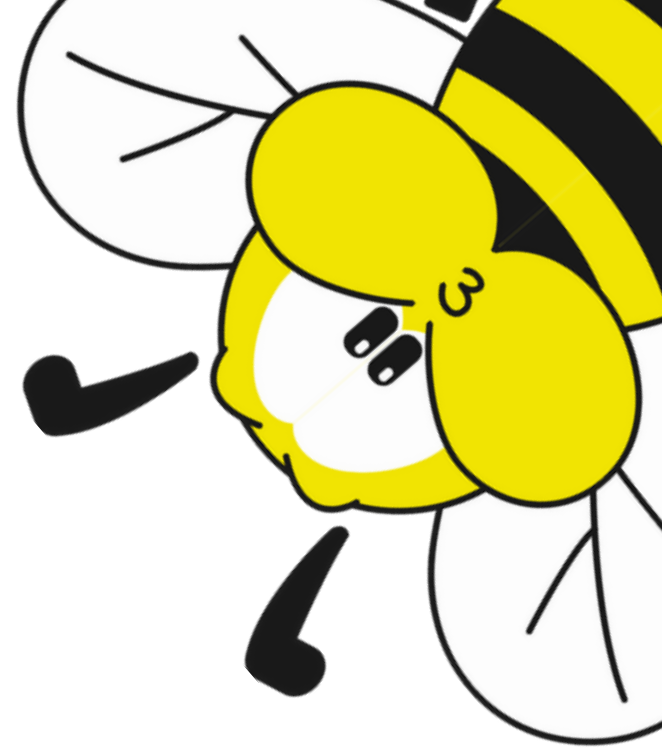
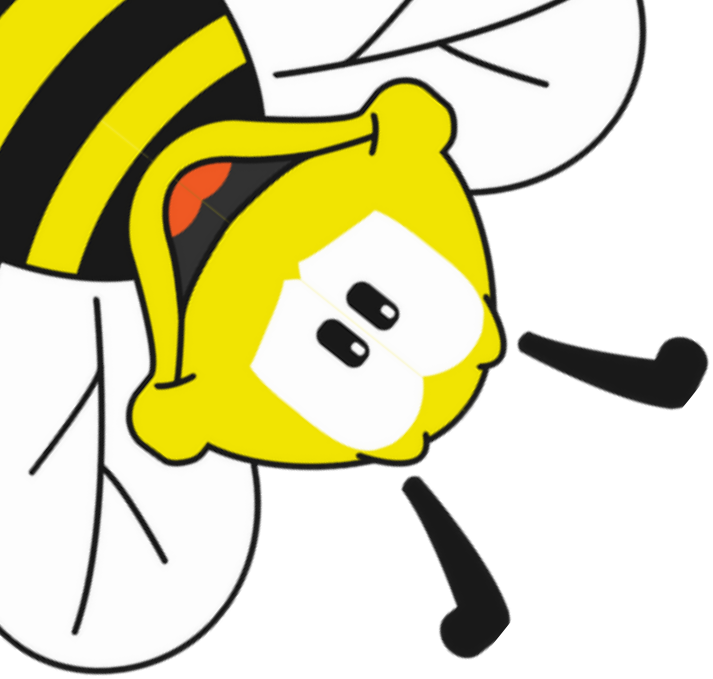
- Portugal
- Iceland
- Italy
- Austria



10. What fast food restaurant do the Japanese traditionally eat at for Christmas?

- KFC
- McDonald's
- Taco Bell
- Burger King





The Funny Trivia Quiz Answers

1. Answer A - Kindle
2. Answer C - Mortimer
3. Answer A - Flamingo
4. Answer D - The Aztecs
5. Answer C - Sloth bear
6. Answer B - The Rembrandts
7. Answer B - The Indians
8. Answer D - Superman
9. Answer C - Italy
10. Answer A - KFC



Visit [CrowdsTrivia.com](https://www.crowds trivia.com) - Play Fun Trivia Quizzes